

BRING SOLAR TO THE STREETS

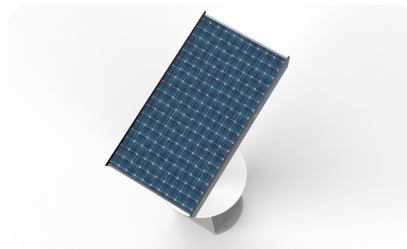
The Dash combines high power and durability with the convenience of a compact design. With a structural steel frame and a marine grade polymer table top, the Dash is perfect for campuses, parks, outdoor seating at restaurants, trails, and train stations.

OVERVIEW

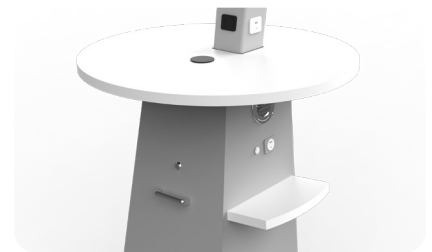
- A highly reliable, long endurance solar powered charging high-top
- A powerful 150W DC solar array and 100 amp-hour AGM battery
- Architectural design, and a fully engineered commercial grade structure
- Supports up to 50-75 smartphone charges/day (typical use)
- Supports charging for cameras, smartphones and other hand-held devices
- Low maintenance with a ten to twenty year expected service life
- True off-grid solar power design that delivers dependable year round charging power even in worst case weather conditions
- Optimized system design includes high quality UL listed solar power components for safe and trouble-free performance
- Attractive non-glare LED table top lighting system for nighttime use
- Fully-anchored, storm-resilient structure



**6 USB Charging Outlets PLUS
1 Wireless Qi Charger**



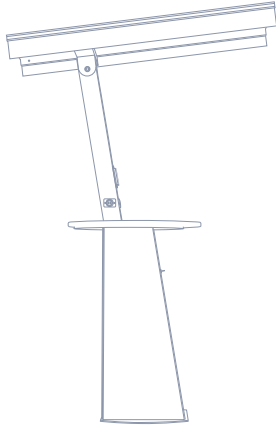
**Compact Design With A
Powerful Solar Array**



**Durable, Marine-Grade Polymer
Table Top with ADA Accessibility**

BENEFITS

- Reduces carbon footprint
- A high-visibility green symbol with tangible benefits for your community
- Provides off-grid electronic device power in a convenient and attractive way
- Provides continuous electronic device charging even during extended grid power outages
- Complements a wide range of landscapes and architectural aesthetics
- A green infrastructure problem solver for any outdoor public space; improves traffic flow and attracts positive interaction
- Connects users to the value of green power and your organization's concrete commitment to sustainability



DIMENSIONS

- Canopy height (high side): 98"
- Canopy head clearance height (low side): 93"
- Table top: 30" diameter
- Cabinet footprint: 2'3" W x 1'7" L
- Overall footprint: 2'6" W x 4'10" L

STRUCTURE

- 100% powder coated structural steel
 - ASTM A-500 Grade B structural steel: vertical tube and solar canopy supporting tube; thickness: 1/8
- Marine-grade polymer table top
- Fully-anchored, storm-resilient structure
- Durable industrial strength construction with easy to clean surfaces
- Total weight: 425 lbs (including electrical components)

SECURITY

- Robust, heavy gauge steel components; inherently vandal-proof
- Tamper resistant hardware and fasteners

WARRANTY

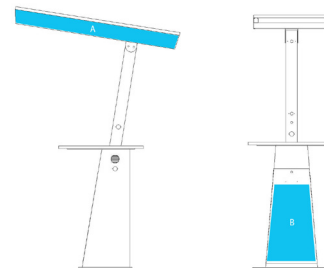
- One year warranty on installation
- Twenty-five year warranty on solar panel power output
- See individual component warranties

SOLAR CHARGING SYSTEM

- Solar array capacity: 150W DC
- Six USB charging ports and 1 Wireless Qi Charger
- Battery: 100 amp-hour AGM battery
- Battery voltage: 12.0 volts DC
- Battery replacement cycle: five years/1000 cycles (typical)

OPTIONS

- User logos or advertiser/sponsor branding
- WiFi Hotspot Circuit



A: East and West logo
B: North cabinet door

Financing available.

The Inflation Reduction Act's tax credits are aimed to reduce energy consumption and transition to renewable energy. The Inflation Reduction Act (IRA) can help reduce the cost of solar products such as the Sunbolt Solar Workstations.

Consult with your tax advisor to determine if you qualify.

1. PV Array Daily Energy Production with average irradiance for Philadelphia, PA in June.
2. Consultation with a tax advisor recommended.
3. http://www.dsireusa.org/incentives/incentive.cfm?Incentive_Code=US02F
4. http://www.dsireusa.org/incentives/incentive.cfm?Incentive_Code=US06F