



# STAND UP FOR SOLAR CHARGING

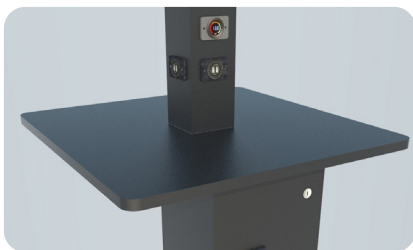
The Sprint can be placed throughout a wide range of landscapes. This durable, slim design is equipped with a 100W solar panel, lighting, table top, and USB ports to provide convenient, outdoor mobile-device charging.

## OVERVIEW

- A highly reliable, long endurance solar powered charging station
- A 100W DC solar array and 23 amp-hour battery bank
- Includes four (4) dual port fast-charging USB/USB-C outlets
- Architectural design with a fully engineered commercial grade structure
- Supports charging for smartphones, tablets, and other hand-held devices
- Low maintenance with a ten to twenty year expected service life
- Fully ADA Accessible
- True off-grid solar power design that delivers dependable year-round charging power even in worst case weather conditions
- Optimized system design includes high quality UL or CE listed solar power components for safe and trouble-free performance
- Attractive non-glare LED table top lighting system for nighttime use
- Fully-anchored, storm-resilient structure

## BENEFITS

- Reduces carbon footprint
- A high-visibility green energy symbol with tangible benefits for your community
- Provides off-grid electronic device power in a convenient and attractive way
- Provides continuous electronic device charging even during extended grid power outages
- Complements a wide range of landscapes and architectural aesthetics
- A green infrastructure problem solver for any outdoor public space; improves traffic flow and attracts positive interaction
- Connects users to the value of green power and your organization's commitment to sustainability



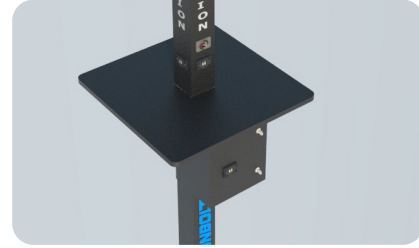
Durable, Marine-Grade Polymer Table Top



LED Table Top Lighting

## DIMENSIONS

- Solar canopy height (high side): 8'6"
- Solar module: 39.8" x 20.1" x 1.4"
- Table top: 24" square with radius edges
- Anchor base: 8.6" square with four 0.750 holes for anchor bolts (included) and two-piece cover



## STRUCTURE

- Pole: 8' powder coated, 4" square, seamless extruded aluminum with top cap.
- Anchor base cover: powder coated cast alloy aluminum base and aluminum two-part base cover.
- Marine-grade polymer table top
- Fully-anchored, storm-resilient structure
- Durable industrial strength construction with easy to clean surfaces
- Total weight: 75 lbs (including electrical components)

## SOLAR CHARGING SYSTEM

- Solar array capacity: 100W DC
- USB and USB Type-C Charging Ports
- Battery: 23Ah LiFePO4 (Lithium)
- Battery voltage: 12V DC
- MPPT Charge Controller with Bluetooth connectivity

## SECURITY

- Robust heavy gauge aluminum components, inherently vandal-proof
- Tamper resistant hardware and fasteners
- Locking steel component box

## WARRANTY

- Twenty-five year warranty on solar panel power output
- See individual component warranties

## OPTIONS

- User logos or advertiser/sponsor branding can be placed on any or all four sides of pole.
- WiFi Hotspot Circuit

1. PV Array Daily Energy Production with average irradiance for Philadelphia, PA in June.  
 2. Consultation with a tax advisor recommended.  
 3. [http://www.dsireusa.org/incentives/incentive.cfm?Incentive\\_Code=US02F](http://www.dsireusa.org/incentives/incentive.cfm?Incentive_Code=US02F)  
 4. [http://www.dsireusa.org/incentives/incentive.cfm?Incentive\\_Code=US06F](http://www.dsireusa.org/incentives/incentive.cfm?Incentive_Code=US06F)

Financing available.

Consult with your tax advisor to determine if you qualify for:

- Federal Business Energy Investment Tax Credit (ITC) of 26% for tax paying individuals<sup>2,3</sup>
- Federal MACR accelerated depreciation for a tax paying business entity<sup>4</sup>